



41 rue Dulong
F-75017 Paris (France)
Tél. : + 33 142 27 79 08
Fax : + 33 142 27 49 95
business@eurobusiness-fr.com
www.eurobusiness-fr.com

VOUS PROPOSE
OFFERS YOU

PNEUMATIQUES
TYRES



LES 5 SERVICES de **EuroBusiness-industrial parts**

FIVE SERVICES of EuroBusiness-industrial parts

- 1- LE DEPANNAGE. *THE BREAKDOWN SERVICE.*
- 2- LE GROUPEMENT. *THE GROUPING.*
- 3- LA RECHERCHE DE PRODUITS. *THE SEARCH FOR PRODUCTS.*
- 4- L'IMPORTATION DE PRODUITS. *THE IMPORTATION OF PRODUCTS.*
- 5- DES PRIX COMPETITIFS. *KEEN PRICES.*

+ De 1000 Fournisseurs, 1 seule Adresse des Services en +
+ than 1000 Suppliers, only one Address, Services in +

UNE SOCIETE DE COMMERCE INTERNATIONAL
AN INTERNATIONAL TRADING COMPAGNY

PRESIDENT : Mme. Lydia DE LUCA
CHAIRMAN:
Gsm : +33 680 53 15 49
l.deluca@eurobusiness-fr.com

DIRECTION : Mr. Jean-Roland JUTIER
MANAGING DIRECTOR:
Gsm : +33 685 11 63 80
jr.jutier@eurobusiness-fr.com



TYRE CATEGORY - PASSENGER CAR / COMMERCIAL / 4X4 - RADIAL

TYRE CONSTRUCTION - RADIAL

TYRE BRAND - ORNET (China)

PASSENGER CAR RADIAL VOLAR 104

Reinforced & improved shoulder design for excellent wear properties and ensures long life.
"T" speed rated.

Supple sidewall for comfortable ride and handling.
Sturdy Steel belt for better resistance to puncture.



Tyre Size	Load / Speed Index	Rec. Rim	Section Width		Overall Diameter		Non Skid Depth		Load / Inflation Single	UTQG			TT / TL
			(mm)	(inch)	(mm)	(inch)	(mm)	1/32		Kgs@psi	Treadwear	Traction	
165/65R13	77 T	5.0	170	6.7	544	21.4	-	0.0	412/36	320	A	B	TL
165/70R13	79 T	5.0	170	6.7	562	22.1	-	0.0	437/36	320	A	B	TL
165/80R13	83 T	4.5	172	6.8	594	23.4	-	0.0	487/36	320	A	B	TL
175/70R13	82 T	5.0	177	7.0	576	22.7	-	0.0	475/36	320	A	B	TL
185/70R13	86 T	5.5	189	7.4	590	23.2	-	0.0	530/36	320	A	B	TL
185/70R14	88 T	5.5	189	7.4	616	24.3	-	0.0	560/36	320	A	B	TL
195/70R14	91 T	6.0	201	7.9	630	24.8	-	0.0	615/36	320	A	B	TL
205/70R14	95 T	6.0	209	8.2	644	25.4	-	0.0	690/36	320	A	B	TL
155/70R12	73 T	4.5	-	0.0	-	0.0	-	0.0	-	-	-	-	-

PASSENGER CAR RADIAL VOLAR F104

High pitch Computer Aided Design for low noise level.
"H" speed rated.

Uniquely designed shoulder with sipes & curved grooves for excellent handling & braking.
Reinforced tyre construction for long life.



Tyre Size	Load / Speed Index	Rec. Rim	Section Width		Overall Diameter		Non Skid Depth		Load / Inflation Single	UTQG			TT / TL
			(mm)	(inch)	(mm)	(inch)	(mm)	1/32		Kgs@psi	Treadwear	Traction	
185/65R14	86 H	5.5	189	7.4	596	23.5		0.0	530/36	320	A	A	TL
195/65R15	91 H	6.0	201	7.9	635	25.0		0.0	615/36	320	A	A	TL
205/65R15	94 H	6.0	209	8.2	647	25.5		0.0	670/36	320	A	A	TL
205/55R16	91 H	6.5	214	8.4	632	24.9		0.0	615/36	320	A	A	TL
205/60R16	92 H	6.0	209	8.2	652	25.7		0.0	630/36	320	A	A	TL

PASSENGER CAR RADIAL OR6697

Straight & Wider shoulder grooves for excellent water drainage & wet grip.
 "H" speed rated.
 Reinforced tyre crown ensures trouble free service.
 Enhanced comfort and low noise level.



Tyre Size	Load / Speed Index	Rec. Rim	Section Width		Overall Diameter		Non Skid Depth		Load / Inflation Single	UTQG			TT / TL
			(mm)	(inch)	(mm)	(inch)	(mm)	1/32		Kgs@psi	Treadwear	Traction	
205/65R15	94 H	6.0	210	8.3	647	25.5	7.2	9.1	670/36	240	A	B	TL

COMMERCIAL / VAN RADIAL OR6067

4 rib design with circumferential grooves for better directional stability.
 Durable construction for reliable performance.
 Optimised non skid depth at center and reinforced rounded shoulder for high mileage & uniform wear.



Tyre Size	Load / Speed Index	P.R.	Rec. Rim	Section Width		Overall Diameter		Non Skid Depth		Load / Inflation		UTQG			TT / TL
				(mm)	(inch)	(mm)	(inch)	(mm)	1/32	Single	Double	Treadwear	Traction	Temperature	
										Kgs@psi	Kgs@psi				
185R14C	102/100 T	8	5.5	191	7.5	654	25.7	8.3	10.5	850/64	800/64	240	A	B	TL
195R14C	106/104 Q	8	5.5	202	8.0	670	26.4	10.3	13.0	950/64	900/64	240	A	B	TL
195R15C	106/104 Q	8	5.5	202	8.0	694	27.3	10.3	13.0	950/64	900/64	240	A	B	TL
195R15C WSW	106/104 Q	8	5.5	202	8.0	694	27.3	10.3	13.0	950/64	900/64	240	A	B	TL
205R14C	109/107 Q	8	6.0	208	8.2	686	27.0	10.3	13.0	1030/64	975/64	240	A	B	TL
155R12C	88 P	-	4.5	157	6.2	553	21.8	-	0.0	560/64	-	240	A	B	TL

COMMERCIAL / VAN RADIAL OR597

4 zig-zag grooves, shoulder slot with sipes for excellent traction and handling performance.
 Round profile on the shoulder area for optimal driving comfort.
 Reinforced tyre construction for long life.



Tyre Size	Load / Speed Index	P.R.	Rec. Rim	Section Width		Overall Diameter		Non Skid Depth		Load / Inflation		UTQG			TT / TL
				(mm)	(inch)	(mm)	(inch)	(mm)	1/32	Single	Double	Treadwear	Traction	Temperature	
										Kgs@psi	Kgs@psi				
205R14C	109/107 Q	8	6.0	208	8.2	686	27.0		0.0	1030/64	975/64	240	A	B	TL

RADIAL A/T OR397

An all weather leisure tyre for 4 wheeled driving.
Designed for on & off the road.
Unique pitch sequence ensures exceptionally low noise.
Wear resistance tread compound for longer life.



Tyre Size	Load / Speed Index	P.R.	Rec. Rim	Section Width		Overall Diameter		Non Skid Depth		Load / Inflation Single	TT / TL
				(mm)	(inch)	(mm)	(inch)	(mm)	1/32	Kgs@psi	
LT31x10.5R15	109 S	6	6.0	268	10.6	775	30.5		0.0	1022/50	TL
LT31x10.5R15 WLW	109 S	6	6.0	268	10.6	775	30.5		0.0	1022/50	TL

TYRE CATEGORY - LIGHT TRUCK / BUS / VAN - BIAS

TYRE CONSTRUCTION - BIAS

TYRE BRAND - ORNET (China)

HIGHWAY RIB TYRE FOR STEER AXLE R501

Unique zig zag grooves provides strong traction, better steering and handling.
Optimum siping across the tread for excellent wet traction.
Optimised tread compound for high mileage and excellent resistance to groove cracks and rib tearing.
Strong casing for better impact resistance and retreadability.



Tyre Size	PR	Load Index	Speed Rating	Rec. Rim	Section Width		Overall Diameter		Non Skid Depth		Load / Inflation		TT / TL
					(mm)	(inch)	(mm)	(inch)	(mm)	1/32	Single	Dual	
											Kgs@psi	Kgs@psi	
7.00-15	10	109/105	L	5.5	204	8.0	759	29.9	10.0	12.6	1040/75	915/75	TT
	12	114/112	K	5.5	204	8.0	759	29.9	10.0	12.6	1180/85	1120/85	TT
6.50-16	10	107/103	L	5.0	186	7.3	748	29.4	11.0	13.9	975/75	860/75	TT
	12	114/107	K	5.0	186	7.3	748	29.4	11.0	13.9	1095/95	965/95	TT
7.00-16	12	115/111	K	5.5	196	7.7	774	30.5	11.0	13.9	1220/95	1075/95	TT
7.50-16	14	122/121	K	6.0	215	8.5	816	32.1	11.3	14.2	1510/95	1440/95	TT
	16	124/120	K	6.0	215	8.5	816	32.1	11.3	14.2	1580/110	1390/110	TT
8.25-16	14	126/125	K	6.5	229	9.0	855	33.7	14.5	18.3	1710/85	1630/85	TT
	16	129/127	K	6.5	229	9.0	855	33.7	14.5	18.3	1845/95	1755/95	TT

HIGHWAY RIB TYRE FOR STEER AXLE R503

Continuous 5 rib sinusoidal pattern with wider center rib for excellent mileage & uniform wear.
 Robust shoulder rib to withstand high stresses and to prevent rib tearing.
 Well designed buttress for better retreadability and cooler running.
 Reinforced casing for extra protection & high retreading factor.



Tyre Size	PR	Load Index	Speed Rating	Rec. Rim	Section Width		Overall Diameter		Non Skid Depth		Load / Inflation		TT / TL
					(mm)	(inch)	(mm)	(inch)	(mm)	1/32	Single	Dual	
											Kgs@psi	Kgs@psi	
4.50-12 ULT	8	77/75	-	3.5	120	4.7	552	21.7	9.0	11.3	415/58	395/58	TT
5.00-12 ULT	8	83/81	-	4.0	144	5.7	568	22.4	9.4	11.8	485/58	460/58	TT
6.50-14	10	104/103	L	4.5	185	7.3	713	28.1	10.8	13.6	910/75	885/75	TT
LT215/80D14	10	111/108	J	6.0	212	8.3	713	28.1	11.5	14.5	1090/75	1000/75	TT
7.00-16	14	118/113	K	5.5	202	8.0	798	31.4	12.5	15.8	1315/100	1160/100	TT
7.50-16	14	122/121	K	6.0	213	8.4	823	32.4	12.4	15.6	1510/95	1440/95	TT
	16	124/120	K	6.0	213	8.4	823	32.4	12.4	15.6	1580/110	1390/110	TT
8.25-16	16	129/127	K	6.5	236	9.3	859	33.8	14.5	18.3	1845/95	1755/95	TT

HIGHWAY RIB TUBELESS TYRE R507

Unique zig zag grooves provides strong traction, better steering and handling.
 Optimum siping across the tread for excellent wet traction.
 Optimised tread compound for high mileage and excellent resistance to groove cracks and rib tearing.
 Strong casing for better impact resistance and retreadability.



Tyre Size	PR	Load Index	Speed Rating	Rec. Rim	Section Width		Overall Diameter		Non Skid Depth		Load / Inflation		TT / TL
					(mm)	(inch)	(mm)	(inch)	(mm)	1/32	Single	Dual	
											Kgs@psi	Kgs@psi	
7.50-16 TL	10	118/116	L	6.0	219	8.6	812	32.0	11.0	13.9	1330/75	1265/75	TL

TYRE CATEGORY - LIGHT TRUCK & BUS - RADIAL
TYRE CONSTRUCTION - RADIAL
TYRE BRAND - ORNET (China)

OR2067

5 Rib Zig-Zag pattern for Steer axle of trucks and all position of buses.
 Tyre with multi sipes for better grip, and traction.
 Special tread compound for high mileage.



Tyre Size	PR	Load Index	Speed Rating	Rec. Rim	Section Width		Overall Diameter		Non Skid Depth		Load / Inflation		TT / TL
					(mm)	(inch)	(mm)	(inch)	(mm)	1/32	Single	Dual	
											Kgs@psi	Kgs@psi	
7.50R16	14	121/117	Q	6.0	215	8.5	805	31.7	-	0.0	1495/105	1315/105	TT

SPECIALISTE DE L'AFRIQUE / SPECIALIZED IN AFRICA

www.eurobusiness-fr.com

Une expérience de plus de 10 années.

More than 10 years of experience.

Une équipe de qualité.

A team of quality.

Un réseau de correspondants sur tous les continents.

A network of correspondents on all the continents.

Des partenaires dans le monde entier.

Partners in the whole world.

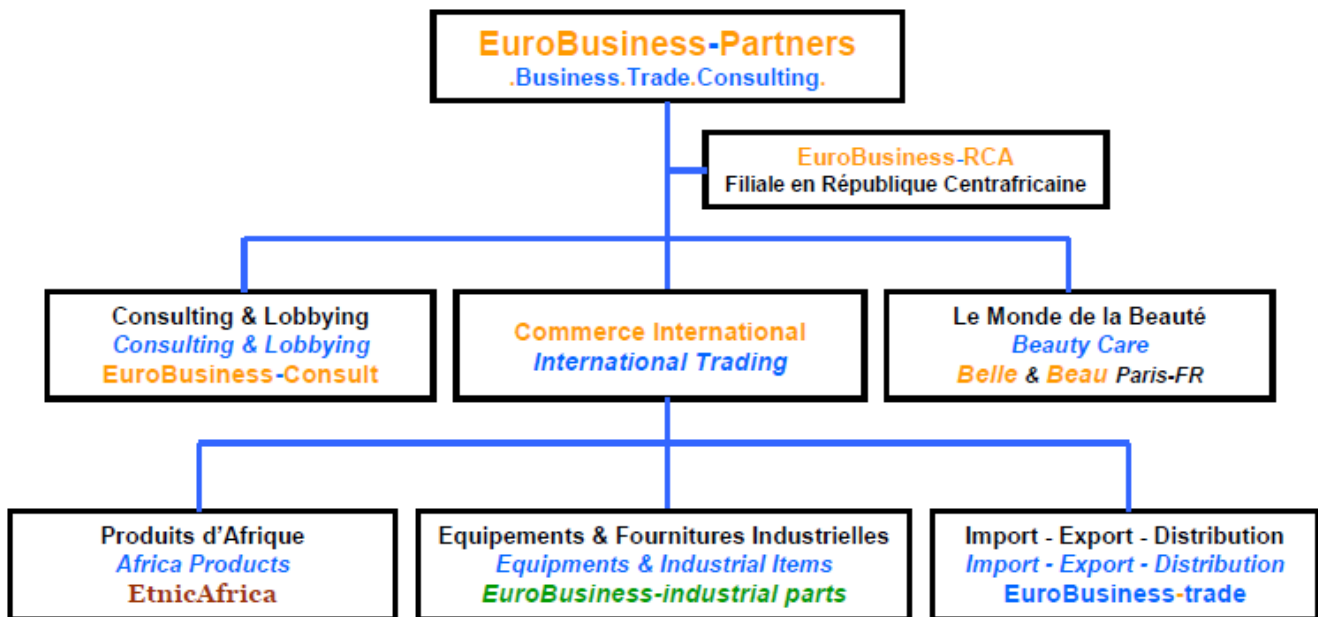
Une veille technologique et commerciale permanente.

A permanent technological and commercial survey.

Un choix de fournisseurs et de partenaires pour satisfaire nos clients.

A large range of suppliers and partners in order to satisfy our customers.

ORGANIGRAMME / ORGANIZATION CHART



ZONES DE PROSPECTIONS / CANVASSING

Europe – Afrique – Moyen Orient – Asie

Europe – Africa – Middle East – Asia



www.eurobusiness-fr.com

BUREAU : 41 rue Dulong
OFFICE : F-75017 Paris
France

Phone : + 33 142 27 79 08 business@eurobusiness-fr.com Fax : + 33 142 27 49 95

PRESIDENT : Mme. Lydia DE LUCA
CHAIRMAN:
Gsm : + 33 680 53 15 49 l.deluca@eurobusiness-fr.com

DIRECTION : Mr. Jean-Roland JUTIER
MANAGING DIRECTOR :
Gsm : + 33 685 11 63 80 jr.jutier@eurobusiness-fr.com

QUELQUES REFERENCES / SOME REFERENCES

ALGERIE : AFRICAFE – HENKEL ENAD – SAFPI – SPA VERRERIE INDUSTRIELLE DU MAGHREB – SARL BOUKHAROUBA ABDALLAH – SARL BATICERAM – SARL KPMA – SARL SAPCITE – GENERAL PLAST – SARL IBRAHIM & Fils - CLINIQUE DES OASIS
ARABIE SAOUDITE : ABWA ESTABLISHMENT
BENIN : MARLAN'S COTTON
CAMEROUN : BERNABE – CICAM – PERENCO – PILCAM – PROLEG – R W KING – SOPICAM.SAFCA – UNALOR – KADJI FOOD – UNION TRADING INTERNATIONAL – LES CIMETETIES DU CAMEROUN – AIR LIQUIDE CAMEROUN
CHINE : GNP JVC – YANTAI HAIDE SPECIAL MOTOR FACTORY
CONGO : SIVOP RDC – GHANDOUR COSMETIQUE CONGO
COTE D'IVOIRE : IVOIRIENNE DE PEINTURES – BERNABE – GETRA FORAGE
GABON : BERNABE – ROUGIER – PERENCO
GUADELOUPE : SGPY SA
GUYANE : B & B GLOBE CARAIBE – TREFLERIE ARMATURES DE GUYANE
INDE : OPTEC INTERNATIONAL
IRAN : AL SAFH TRADING – MP CO
ISRAEL : GOVERNMENT OF ISRAEL
MADAGASCAR : AQUACULTURE MAHAJAMBA – LA COTONNIERE – LES PECHERIES DE NOSSI BE - SOCTAM
MALI : OMA OMNIUM MALI – PRODIMAL – SOMAPIL
MAROC : LABORATOIRE LARATS – LAFARGE CIMENTS – NOVARTIS PHARMA – OFFICE CHERIFIEN DES PHOSPHATES – ROYAL AIR MAROC – THERMOPLAST – ONHYM D.A.M
MARTINIQUE : SISAL – SACHERIE CLERY – LA GARONNE ALUMINIUM
MAURITANIE : SNIM
NIGER : SOMAIR - ENITEX
NIGERIA : OK SWEETS (OK FOODS LTD)
REPUBLIQUE du CONGO : ENI CONGO
SENEGAL : COMPAGNIE SUCRIERE SENEGALAISE – PFIZER – SIGELEC - BERNABE
TAHITI : CEGELEC
TOGO : NOUVELLE INDUSTRIE DES OLEAGINEUX DU TOGO – SIVOP TOGO - WABCO
TUNISIE : EL FOULADH – Groupe ALMES – Groupe HAMROUNI – Groupe POULINA – LEAR AUTOMOTIVE – MISFAT - SOCOMENIN – STIP –TUNIMATEC – TRAPSA – VALEO (LEONI) – AUTOMOTIVE COMPONENTS TUNISIA – SICAM - TUNISIE PORCELAINE

